

BLOCK 18 (Existing) PROPOSED BLOCK 17 WITH BLOCK 19 IN THE BACKGROUND TOP OF ESPLANADE STEPS BLOCK 16 (Existing)

- This drawing is copyright:
 1 Do not scale this drawing.
 2 Errors and omissions to be immediately notified to Architect.
 3 All dimensions to be checked on site.
 4 To be read with relevant Engineers drawings.
- Notes:
 All dimensions in millimetres

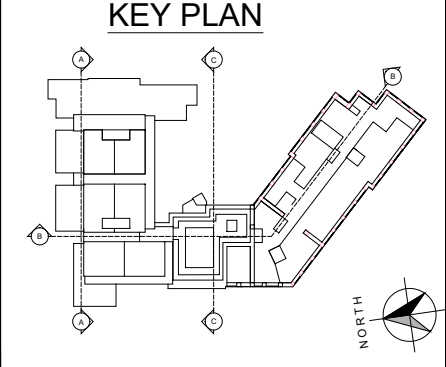
External Finishes:
 External Wall Finish:
 Brick to be light coloured buff brick with some over-burn.
 Tower to be clad in folded aluminum panels.

Roofs:
 Roof Gardens as per RMDA Landscape Architect's drawings.
 Roof of tower to be clad in standing seam metal/aluminium.
 Selected paving to penthouse terrace areas
 Roof guarding to be flat plate simple design behind parapet.

Windows/Doors:
 Colour coated aluminium window/door systems to selected RAL colour.
 Glazing to tower apartments to be full height aluminium curtain walling to approved RAL colour.
 Pre-finished metal doors/ timber gates to service rooms and car park entrance.
 Opaque glazing to communal stair core windows which overlook existing or future adjacent developments.

External:
 Metal/Glass guarding at balconies and podium edges. Opaque glass privacy screen to adjacent balconies.
 Painted metal railing at ground floor terraces.
 Soft and Hard landscape as shown on landscape architect's drawings.

Signage:
 Backlit individual letters at retail units.
 Rainwater goods:
 uPVC or aluminium downpipes.



revisions	date	ins
description		
Block 17		
East Elevation in Context		
Facing Dublin-Belfast		
Railway Tracks		
job	scale	1:200 A2+
Block 17,	date	JUL '19
Clongriffin,	drawn	TCKM
Dublin 13	checked	MG

client
 Gerard Gannon Properties

issue
 Clongriffin SHD 1
 Planning

CONROY CROWE KELLY
 ARCHITECTS
 65 MERRION SQUARE
 DUBLIN 2
 PHONE 66139901 FAX 6765715
 E-MAIL info@eck.ie